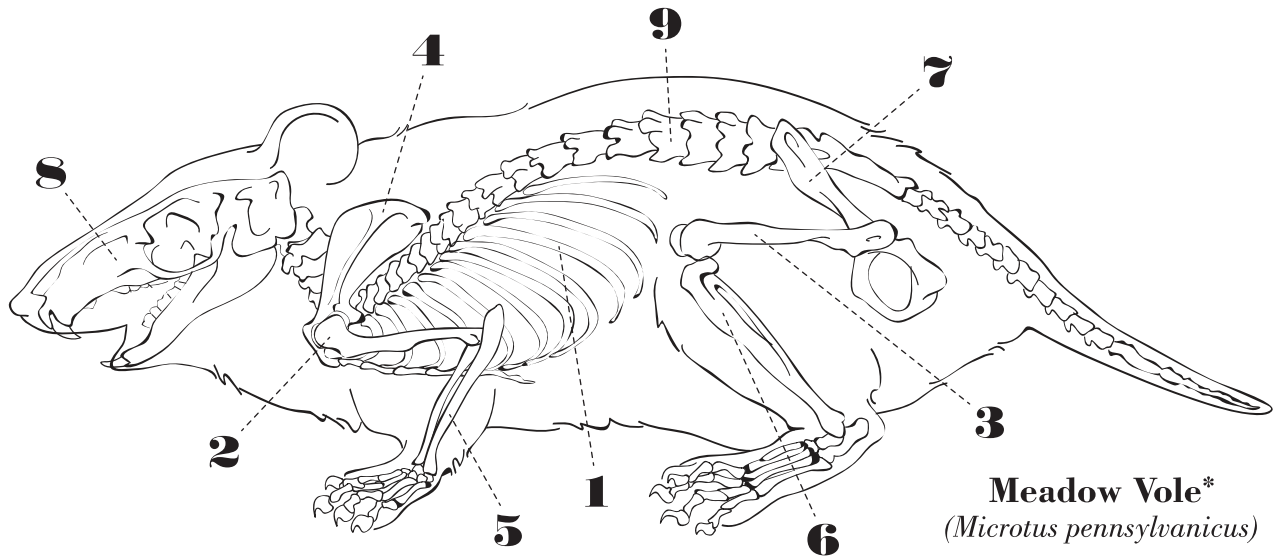


OWL PELLET RODENT BONE ID CHART

Use this key to determine what you've found!



<p>1</p> <p>Ribs</p>	<p>2</p> <p>Humerus</p>	<p>3</p> <p>Femur</p>	<p>4</p> <p>Scapula (Shoulder Blade)</p>
<p>5</p> <p>Radius & Ulna</p>	<p>6</p> <p>Tibia & Fibula</p>	<p>7</p> <p>Pelvis</p>	
<p>8</p> <p>Skull & Mandible</p>		<p>9</p> <p>Vertebrae</p>	



Bone ID Chart

design by Natalya Zahn
www.iheartungulates.com

*Other species commonly eaten by owls (and found in pellets) include shrews, moles, mice, chipmunks, small birds, squirrels, rats and rabbits. Look for a variety of sizes of the same bone type!